

Preface

This instruction sheet covers the installation of the Fiber Optic WMU Wall Mount Interconnection Unit, which includes Splitter Applications.

Contents:

General Notes	1
Step 1 – Install WMU to Wall or Plywood Backboard	2
Step 2 – Attach Decal and Install Panels	Error
! Bookmark not defined.	
Step 3 – Reserve Space Allocation	3
Step 4 – Prepare Fiber Optic Cable	6
■ Adapter Panels, Adapters, and Connectors	Error!
Bookmark not defined.	
Step 5 – Choose Bottom Feed or Top Feed Cross-Connection Module Cable Feed Arrangement	7
■ Recommended for Bottom-Feed Cable Application	7
■ Recommended for Top-Feed Cable Application	7
Step 6 - Prepare WMU with Direct Connect Bracket	9
Step 7 - Installing the Direct Connect Splitter	10
Step 8 - Pigtail Splicing	11

General Notes

- For a cross-connection module arrangement, follow Steps 1 through 5.
- For a Direct Connect Splitter arrangement , follow Steps 8 and 9.

Step 1 – Install WMU to the Wall



Figure 1. Install WMU to Wall

1. WMU Interconnection Unit (LIU), attaches to the wall using 4 screws provided with the unit.
2. Install the Adapter panels onto the WMU. The WMU2 accepts 2 panels and the WMU4 accepts 4 panels.

Step 2: Attach Decal and Install Fiber Rings



Figure 2. Attach Decal and Install Fiber Rings

1. WMU Interconnection Unit (LIU), install the port arrangement decal.
2. Open the LIU door and attach the plastic ring holders into the positions shown, making sure the ring openings are to the outside.

Step 3 – Reserve Space Allocation

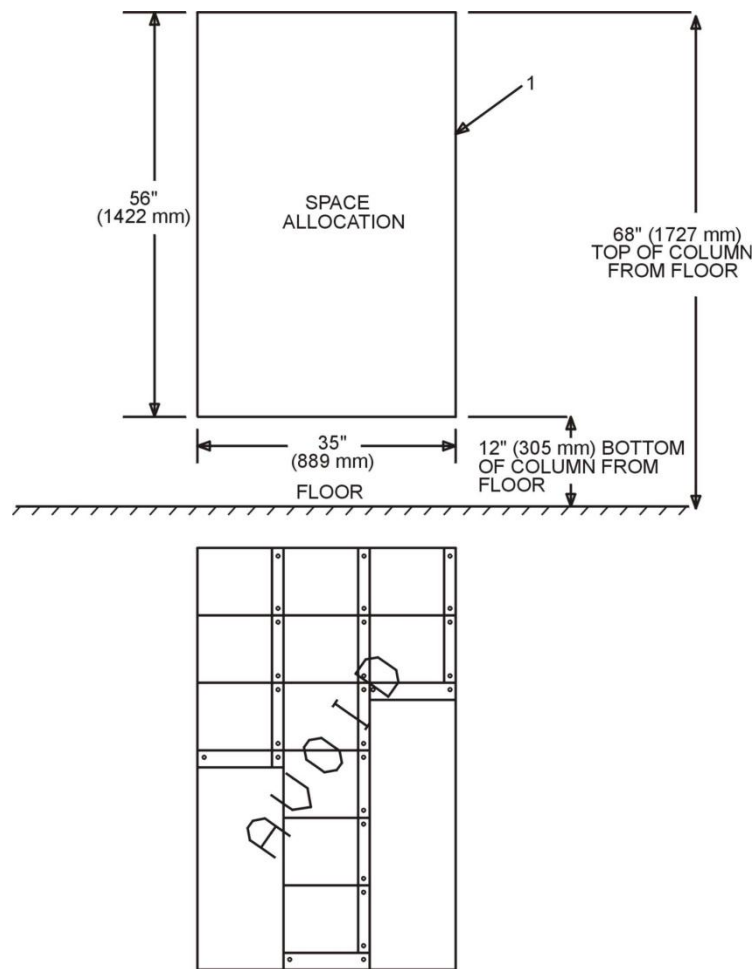


Figure 2. Space Allocation

⇒NOTE:

The type of growth sequence shown above is not recommended and must be avoided.

1. Reserve space allocation in the mounting area to allow for future growth. For example, with the space allocation shown above, cross-connection modules may be stacked to a column of 6 modules high and 3 columns wide with the top of the uppermost module placed not more than 68 inches (1727 mm) from the floor.

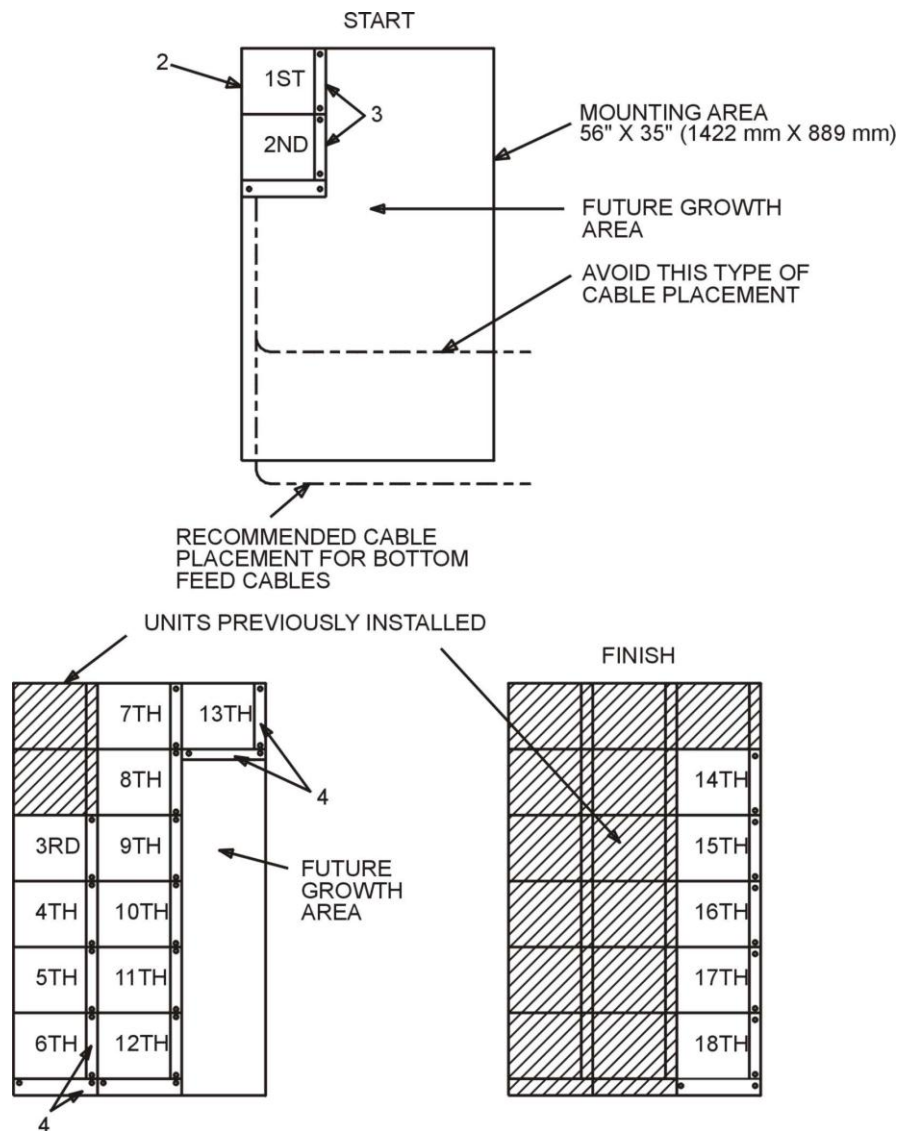


Figure 3. LIU Installation to a Backboard or Wall

2. Mount the first WMU LIU in the upper-left portion of the reserved space.
3. Leave a 1/4-inch (6 mm) space between columns to allow for adjacent hinges.

Step 4 – Prepare Fiber Optic Cable

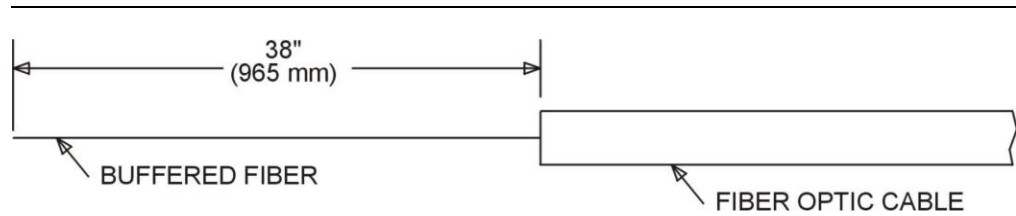


Figure 4. Preparing Fiber Optic Cables

1. Prepare the fiber optic cable as shown.
2. Install the appropriate connectors on the buffered fibers for the type of adapter panel and adapters to be used.

Step 5 – Choose Bottom Feed or Top Feed Cross-Connection Module Cable Feed Arrangement

Recommended for Bottom-Feed Cable Application

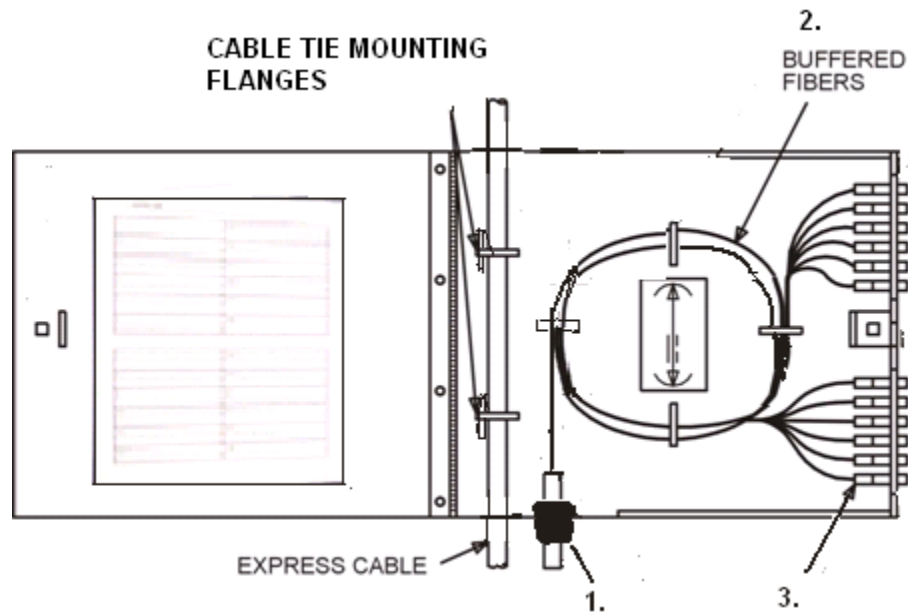


Figure 5. Cable Feed Arrangement

1. Using the grommet provided secure the preconnectorized fiber optic cable to the mounting port closest to the adapter panels.

⇒ NOTE:

- Only express cables feeding upper modules are secured in the express cable retaining rings.
2. Carefully insert the fibers into the plastic ring holders, starting with the rear ring, making not less than a 1-1/2 inch (38 mm) radius bend in the fibers.
 3. Install the fiber connectors into the adapters on the adapter panel.

Recommended for Top-Feed Cable Application

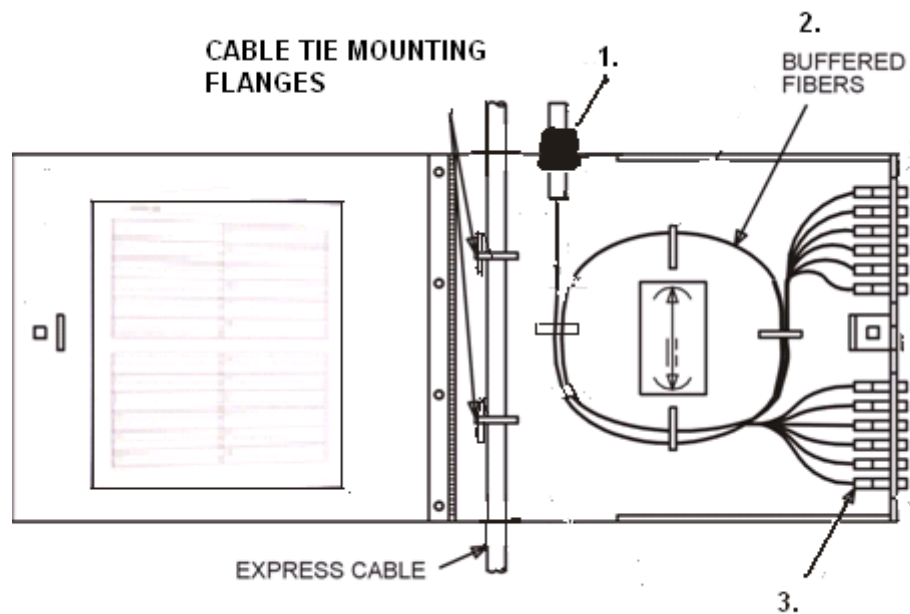


Figure 6. Cable Feed Arrangement

1. Using the grommet provided secure the pre-connectorized fiber optic cable to the side of the mounting flange closest to the adapter panels.

⇒ **NOTE:**

Only express cables feeding lower modules are secured in the express cable retaining rings.

2. Carefully insert the fibers into the plastic ring holders, starting with the rear ring, making not less than a 1-1/2 inch (38 mm) radius bend in the fibers.
3. Install the fiber connectors into the adapters on the adapter panel.

Step 6 – Install Direct Connect Splitter Bracket



Figure 8. Direct Connect Splitter Bracket

1. If the WMU is not purchased with the Direct Connect Splitter already installed then the bracket is installed on the right side wall of the WMU with the two screws provided.

⇒ NOTE:

It is easier to pre-drill holes in the unit and install the bracket prior to mounting on the wall.

Step 7 – Install Direct Connect Splitter into the Bracket

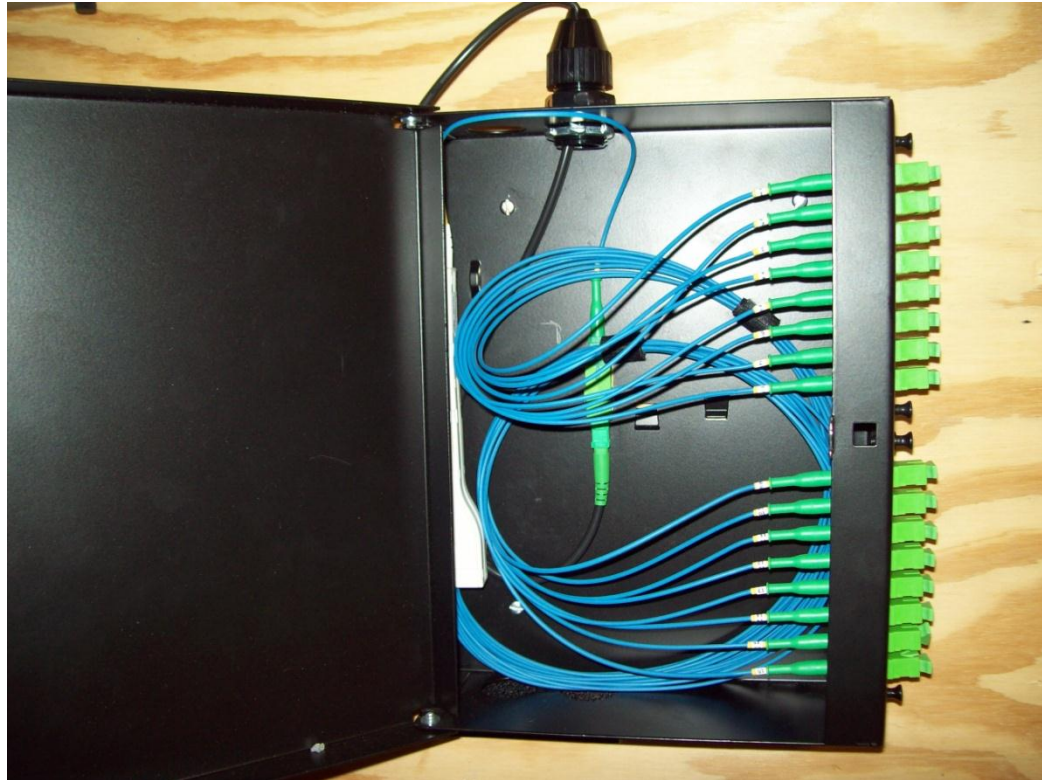


Figure 9. Direct Connect Splitter Installation

1. If the WMU is not purchased with the Direct Connect Splitter already installed then the Direct Connect Splitter is placed into the splitter bracket.
2. The output ends are routed to the bottom of the WMU and attached to the adapter panel.
3. The input fiber is routed to the top of the WMU and connected to the adapter attached to the base of the WMU.

⇒NOTE:

The 1X16 utilizes 8 port adapter panels in the WMU2. The 1X32 utilizes 12 port adapter panels in the WMU4

Step 8 – Pigtail Splicing



Figure 10 Pigtail Splice Installation

1. Install the splice organizer bracket into the raised metal retainer.
2. Install the pigtail connectors into the adapter panel.
3. Attach the cable in the grommets per step 5 into either of the ports.
4. Splice the terminating fiber to the pigtail fiber.
5. Route the terminating fiber first in the fiber rings and then route the pigtail fiber in opposite direction so that the pigtail fiber enters the organizer from the top and terminating fiber enters the organizer from the bottom.